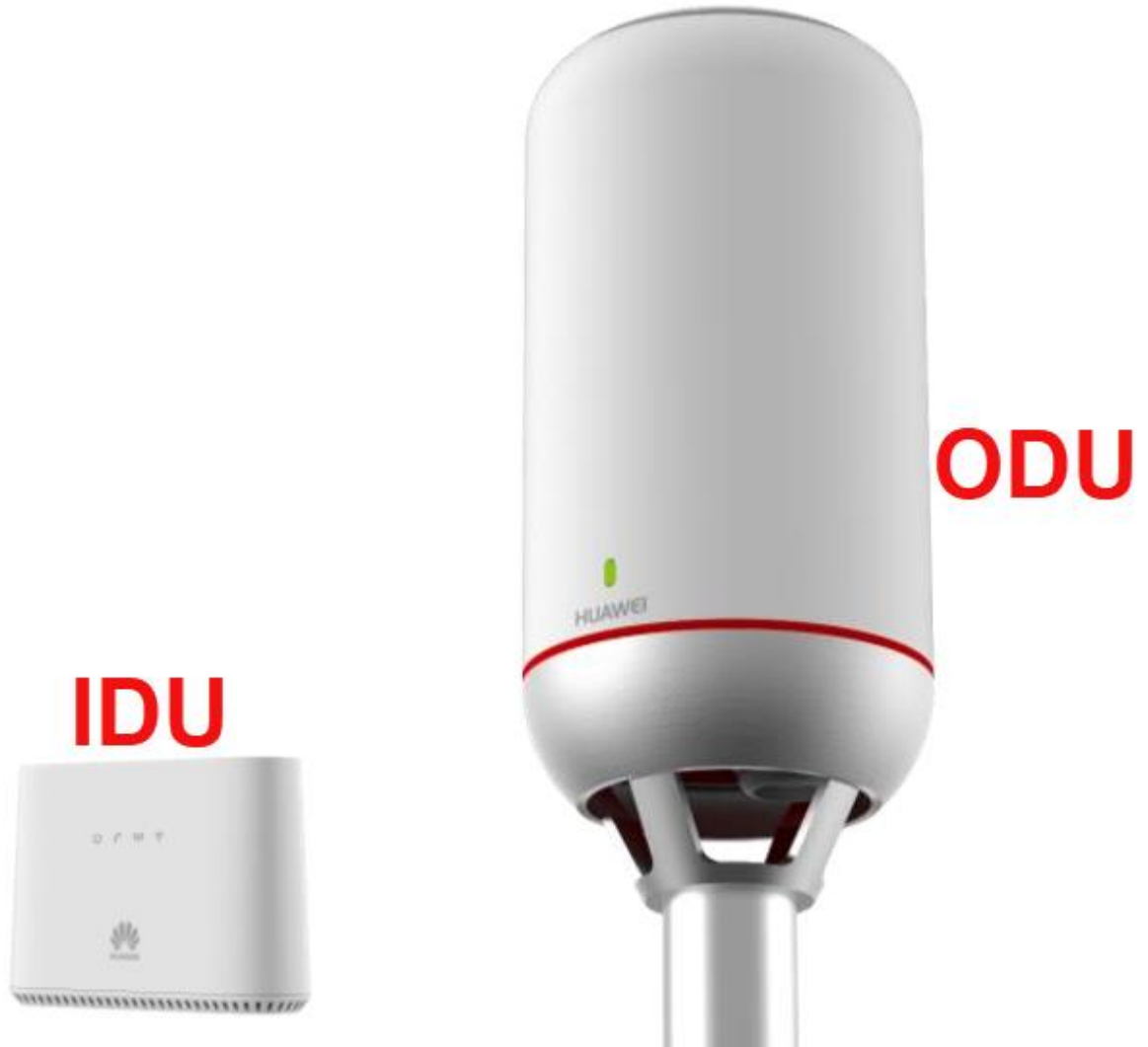
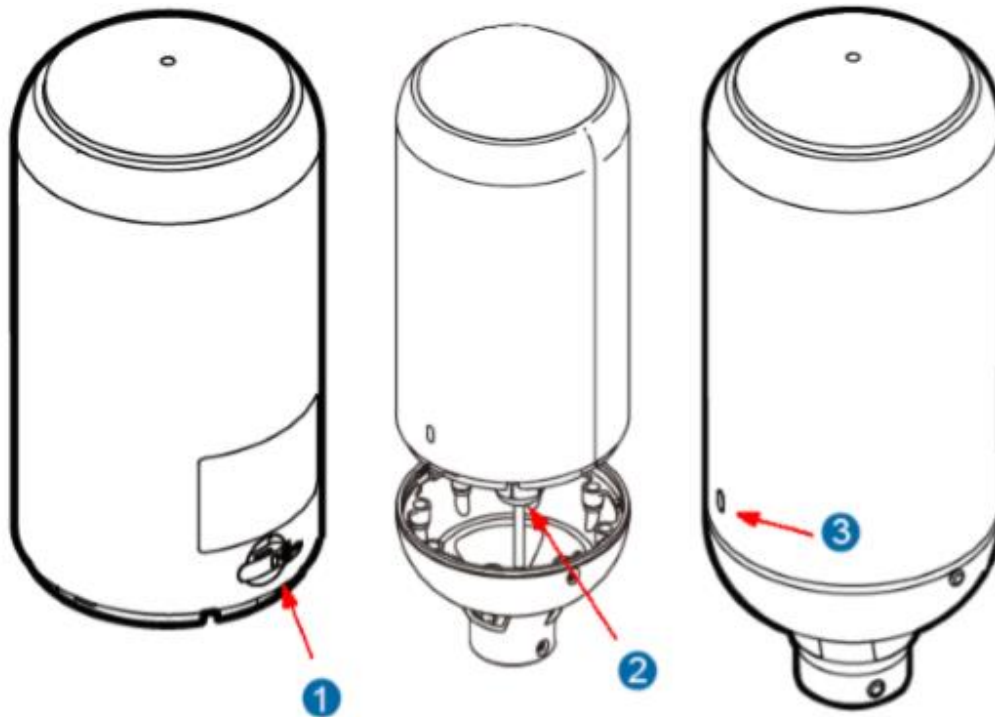


B2368- User Guide



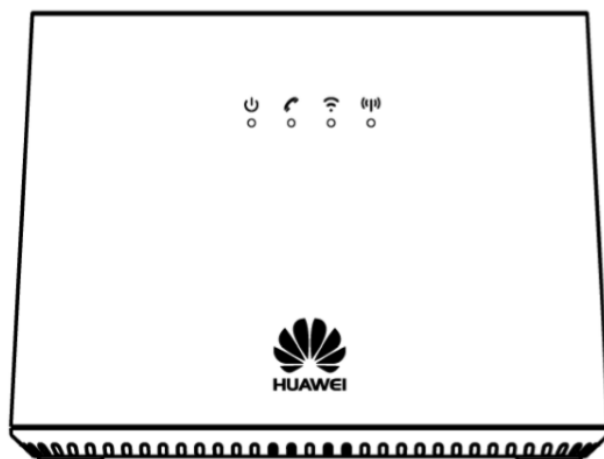
1. Hardware Description



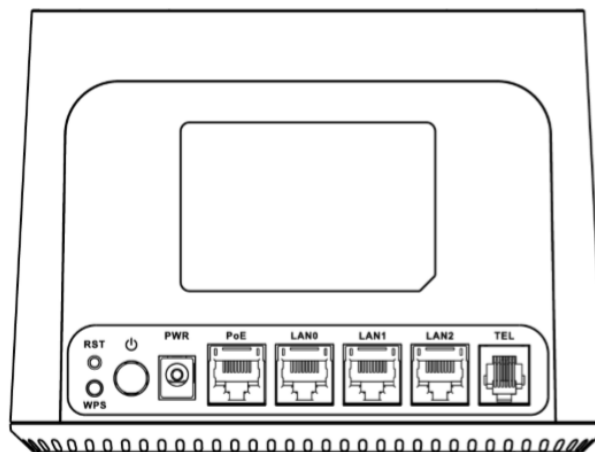
1. One slot for one SIM card (3FF Micro-SIM is supported)
2. One RJ-45 connector for connecting to the IDU PoE port
3. LED indicator

ODU LED Indicators

Color	LED Behavior	Status Indication
Off		Power Off
Red	Steady ON	Error, malfunction, or no SIM
	Blinking	Upgrading
Green	Blinking	Booting up
	Steady ON	Strong LTE signal: $\text{SINR} \geq 10 \text{ dB}$
Blue	Steady ON	Medium LTE signal: $10 \text{ dB} > \text{SINR} \geq 4 \text{ dB}$
Orange	Steady ON	Weak LTE signal: $\text{SINR} < 4 \text{ dB}$
	Blinking	No LTE signal, searching, or disconnected.







IDU Front Panel



IDU Rear Panel

IDU LED Indicators description (from left to right)

LED	COLOR	STATUS	Description
PWR /SYS 	Green	On	The LTE Device is receiving power and ready for use.
		Blinking	The LTE Device is booting up.
	Red	On	The LTE Device detected an error while self-testing, or there is a device malfunction or no SIM card.
		Blinking	The LTE Device is upgrading the firmware.
	Off		The LTE Device is not receiving power.
PHONE 	Green	On	A SIP account is registered for the phone port.
		Blinking	A telephone connected to the phone port has its receiver off of the hook or there is an incoming call.
	Yellow	On	A SIP account is registered for the phone port and there is a voice message in the corresponding SIP account.

LED	COLOR	STATUS	Description
		Blinking	A telephone connected to the phone port has its receiver off of the hook and there is a voice message in the corresponding SIP account.
	Off		The phone port does not have a SIP account registered.
WPS /Wi-Fi 	Green	On	Either IEEE 802.11bgn or 802.11ac is activated.
		Blinking	The LTE Device is communicating with wireless clients.
	Yellow	Blinking	The LTE Device is setting up a WPS connection.
	Off		The wireless network is not activated.
LTE Signal Strength 	Green	On	Strong LTE signal: SINR \geq 10 dB
	Blue	On	Medium LTE signal: 10 dB > SINR \geq 4 dB
	Orange	On	Weak LTE signal: SINR < 4 dB
		Blinking	No LTE signal, searching, or disconnected.
LAN 0-2	Yellow (Giga Ethernet)	On	The LTE Device has a successful 1000 Mbps Ethernet connection with a device on the Local Area Network (LAN).
		Blinking	The LTE Device is sending or receiving data to/from the LAN at 1000 Mbps.
	Green (Fast Ethernet)	On	The LTE Device has a successful 10/100 Mbps Ethernet connection with a device on the Local Area Network (LAN).
		Blinking	The LTE Device is sending or receiving data to/from the LAN at 10/100 Mbps.
	Off		The LTE Device does not have an Ethernet connection with the LAN.

2. Accessing the web configuration

Step 1. Make sure all hardware is properly connected

Step 2. Launch your web browser

Step 3. Type 192.168.1.1 as the URL

Step 4. The Web Configurator password screen displays.

- For user access, type **"user"** as the default **username** and **"LTE@Endusr"** as the default **password**.

Click login. If you have changed the password, enter your own password and click Login.



Login Screen

Step 5. The following screen displays if you have not yet changed your password. It is strongly recommended you change the default password. Enter a new password, retype it to confirm and click Modify; alternatively click Skip to proceed to the main menu if you do not want to change the password now.



Step 6. The Connection Status screen appears

