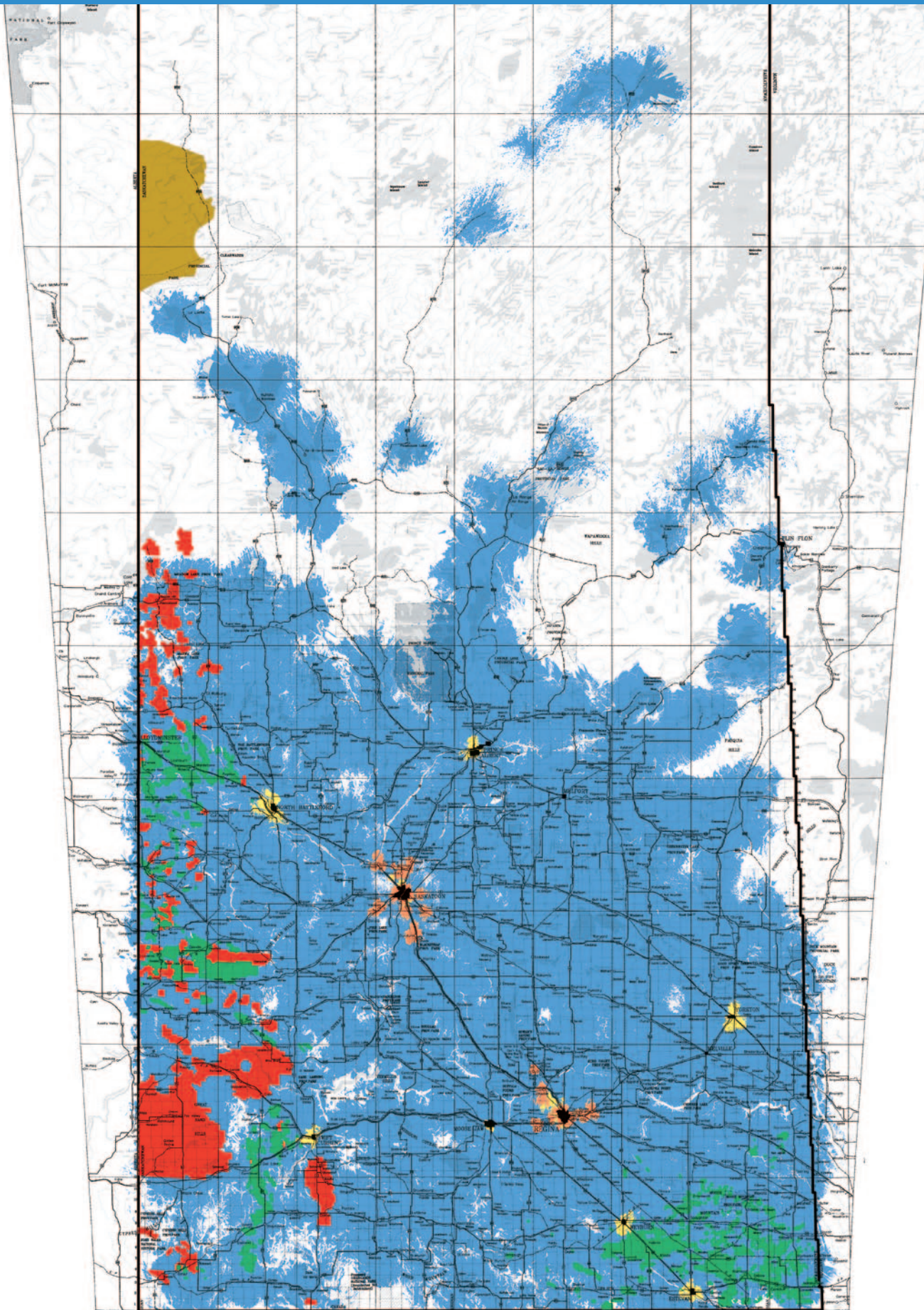


SaskTel Wireless Coverage for Oil and Gas Resource Sites of Saskatchewan

Experience Saskatchewan's largest and fastest network!



4G LTE devices can access both the 4G and 4G LTE networks.

- 4G Coverage – December 31, 2012
- Existing 4G LTE Coverage – April 11, 2013
- Future 4G LTE Coverage – Throughout 2013, the network will also be extended to Weyburn, Prince Albert, Moose Jaw, Yorkton, Swift Current, Estevan and North Battleford.

- Oil Pool
- Gas Pool
- Oil sands potential

4G Network International Roaming available in over 200 countries worldwide. Ask us for details.

SaskTel
Your Life. Connected.™

Visit sasktel.com/coverage for more information

The coverage areas shown are approximate. SaskTel cannot guarantee that coverage will be exactly as shown since factors beyond our control also affect coverage. These include weather conditions, terrain, your distance from a cell tower, and whether the cell is being used indoors or outdoors. Saskatchewan 4G coverage is as of December 31, 2012. 4G LTE coverage effective date is April 11, 2013. Coverage areas outside of Saskatchewan are subject to change without notice. 4G and 4G LTE are not available in all areas. Fastest claim is based on LTE speed tests conducted by an independent 3rd party comparing SaskTel 4G LTE network service to any other LTE network service in Saskatchewan.